

How To Remove & Replace the Clorox® Total 360® Air Filter



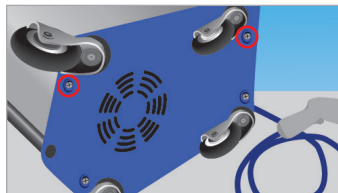
1. Place device on steady, flat, and clean surface, remove bottles, turn on power and spray the remaining liquid in the system.



2. Unplug the device from all power sources and leave it unplugged for at least ten minutes.



3. Once empty, gently lay the device on its side.



4. Using a cross tip (Phillips) screwdriver, remove the screws from the bottom of the device (indicated by the red circles).



5. Place device upright on a steady flat surface, then remove the three screws indicated by the red circles. **Note:** When you reinstall the grey left side cover, please note that this side of the cover sits on top of the end panel cover.



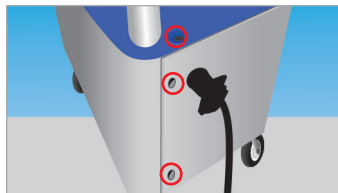
For more information, contact the Clorox Total 360 Support Team.
U.S.A.: 866-397-8360
Canada: 877-694-7360
Service@CloroxTotal360Support.com
www.CloroxTotal360Support.com

© 2022 Clorox Professional Products Company,
1221 Broadway, Oakland, CA 94612.

NI-56732

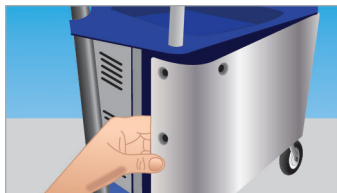


6. Remove the four screws indicated by the red circles on the front side of the device.

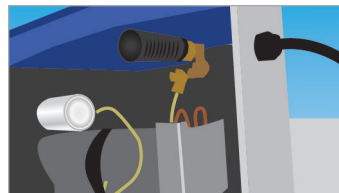


7. Remove the three screws indicated by the red circles on the end of the device and on the top of the blue plate.

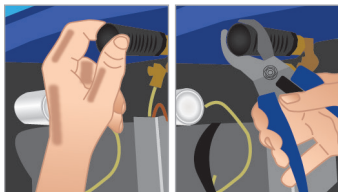
Note: When you reinstall the grey left side cover, please note that this side of the cover sits underneath the end panel cover.



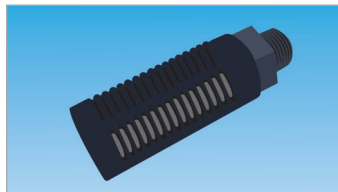
8. Starting near the vertical metal handle post, gently pivot the left side cover off of the device.



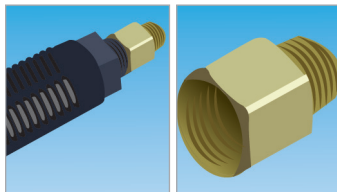
9. Locate the air filter.



10. First, try to unscrew (counterclockwise) the air filter by hand. If you are unable to remove it by hand, use pliers to grab the end of the filter. Lightly apply pressure to the air filter, just enough to loosen it, then continue by hand only. The filter is thin plastic so be gentle.



11. Typically the airfilter will come out as you see in this picture. If so, proceed to step 12.



Note: Sometimes the air filter will be tight to the brass adapter fitting. Remove the brass fitting with the filter.

Note: If both the air filter and brass fitting come out, use pliers to remove the brass fitting from the old filter. Install the brass fitting onto the new filter, then reinstall the new air filter & brass fitting. Proceed to step 12.

12. Reverse all steps to reinstall the new filter and reinstall the covers.